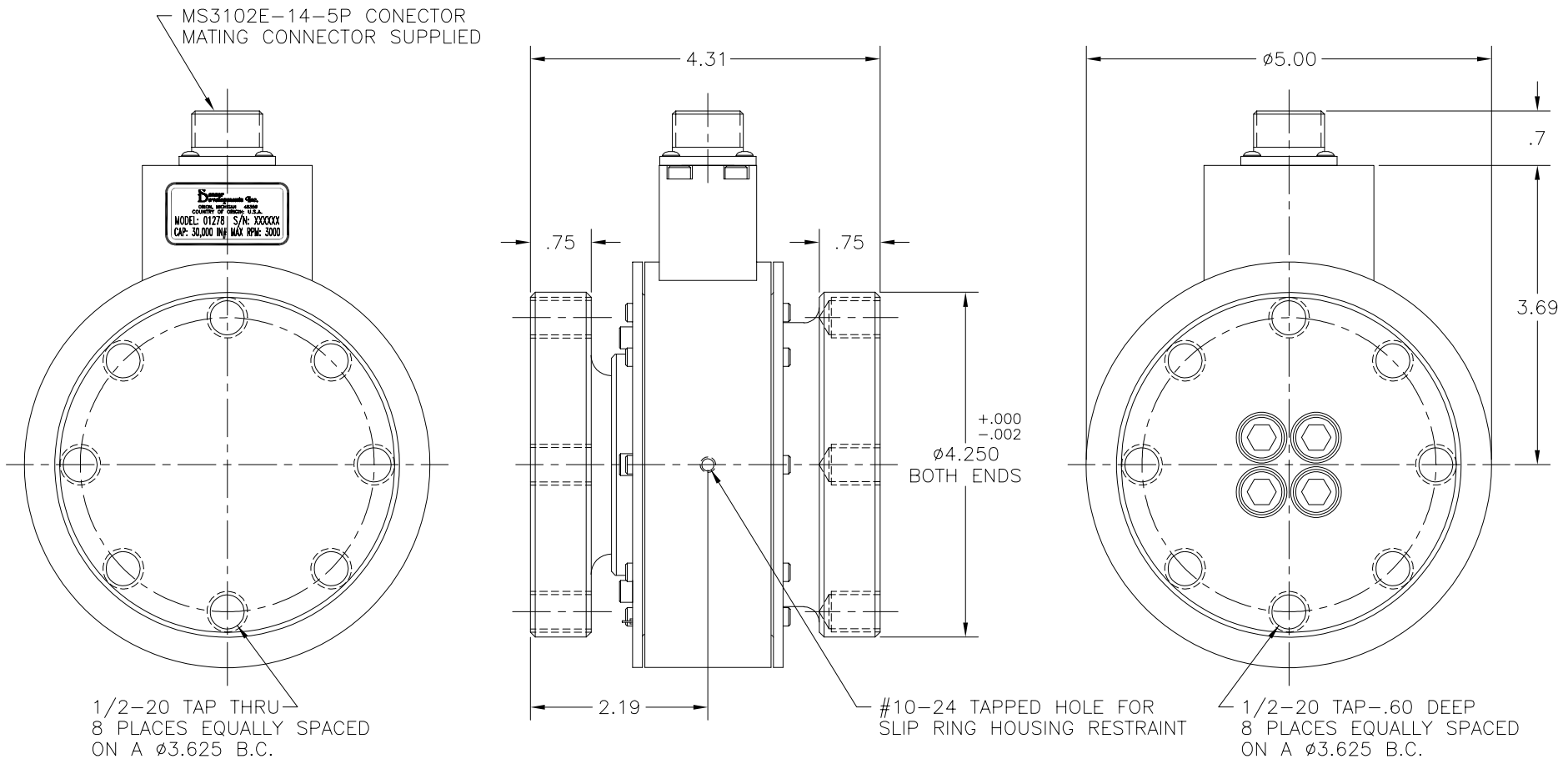


REV	DESCRIPTION	BY	DATE	CHK	ENG	REL DATE
-	REL. FOR PRODUCTION	-	-	-	-	4-20-00
A	1/2-20 HOLES WERE 3/8-24	JMK	5-4-00	JMK	JMK	5-4-00



## GENERAL SPECIFICATIONS



**Distributed by: Spare S.r.l.**  
Via Carlo Spagnolo, 4 - 27057 Varzi - Pavia - Italy  
tel. +39-0383-54.51.51 - fax: +39-0383-54.50.51  
<http://www.spare.it> - <http://www.spareonweb.com>  
e-mail: [sales@spare.it](mailto:sales@spare.it)

TORQUE SENSOR

MODEL: 01278

SLIP RING

MODEL: 90060

CAPACITY (IN. LBS.) F.S. \_\_\_\_\_ 30,000  
OVERLOAD CAPACITY (%F.S.) \_\_\_\_\_ 150  
OUTPUT (mV/V) NOM., F.S. \_\_\_\_\_ 1.1  
HYSTERESIS (%F.S.) \_\_\_\_\_ .15  
NON-LINEARITY (%F.S.) \_\_\_\_\_ .15  
COMPENSATED TEMP RANGE (°F) \_\_\_\_\_ 70 to 170  
USEABLE TEMP RANGE (°F) \_\_\_\_\_ -60 to 250  
BRIDGE RESISTANCE (Ω) \_\_\_\_\_ 700  
MAXIMUM EXCITATION VOLTAGE (VDC/VAC RMS) \_\_\_\_\_ 20

CIRCUITS \_\_\_\_\_ 4  
RING MATERIAL \_\_\_\_\_ COIN SILVER  
BRUSH MATERIAL \_\_\_\_\_ SILVER GRAPHITE (80/20)  
MAXIMUM RPM \_\_\_\_\_ 3,000

POLARITY: C.W. UPSCALE  
ASSEMBLY DWG REF: 18647D0-\*  
\*-INDICATES CURRENT REV

PIN CODE	
PIN	FUNCTION
A	+ EXC.
B	+ SIG.
C	- SIG.
D	- EXC.
E	N/C

INSTALLATION		CHECKED BY	
MODEL: 01278-034-C0000		JMK	
FINISH	SCALE FULL	PROJ. ENG.	JMK
MATRL.		DRAWN BY	GMC
UNLESS OTHERWISE SPECIFIED DIM'S ARE IN INCHES		DATE 4-19-00	
X.X ±.03 X.XX ±.01 X.XXX ±.005 ANG. ±.5°		D.E. REVIEW	
BY		DATE	
DRAWING NUMBER		18648C0-A	
Sensor Developments Inc. ORION, MI 48359			